

Ville de SOMMIÈRES

Secteur Sauvegardé

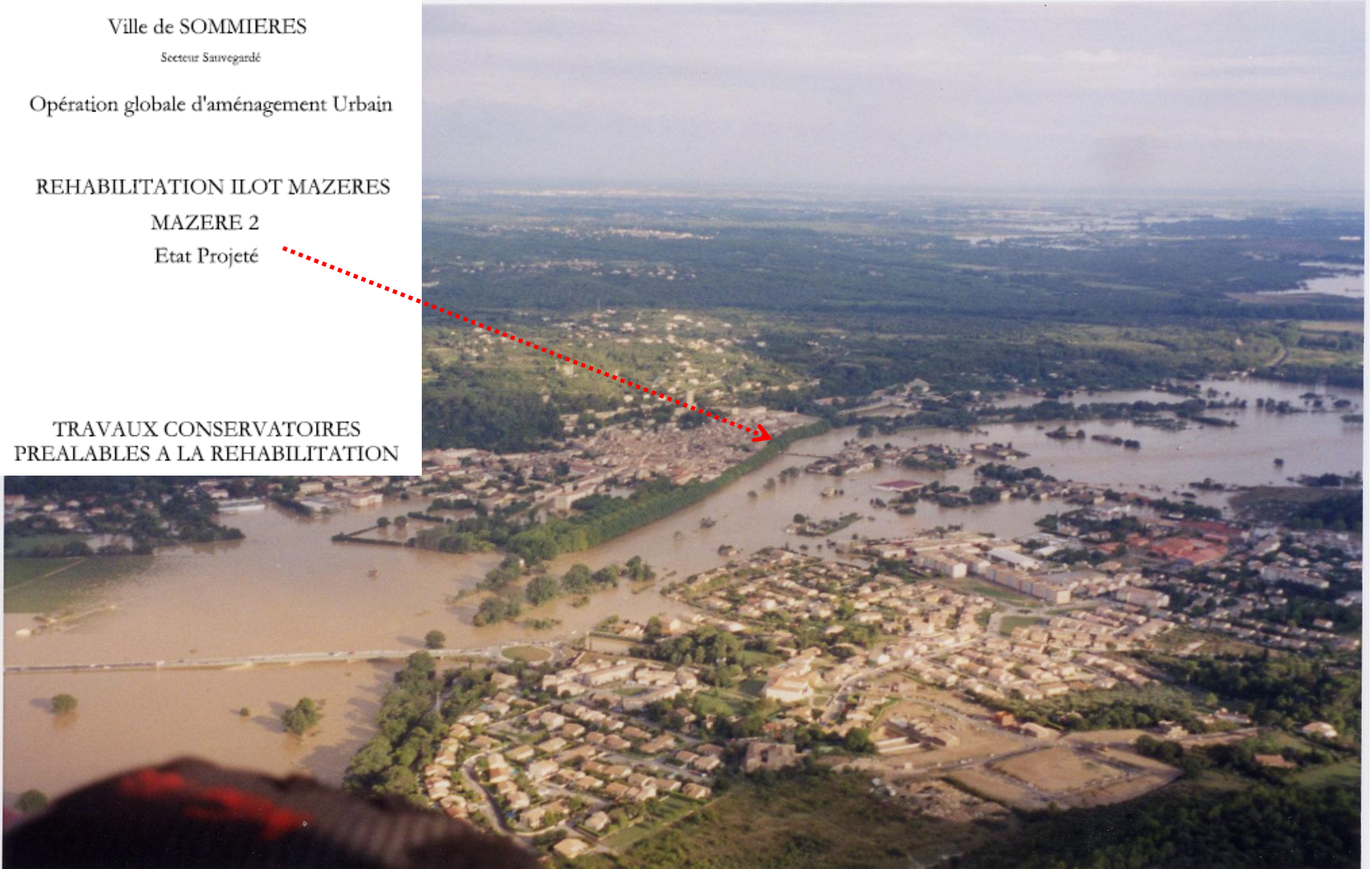
Opération globale d'aménagement Urbain

REHABILITATION ILOT MAZERES

MAZERE 2

Etat Projeté

TRAVAUX CONSERVATOIRES
PREALABLES A LA REHABILITATION

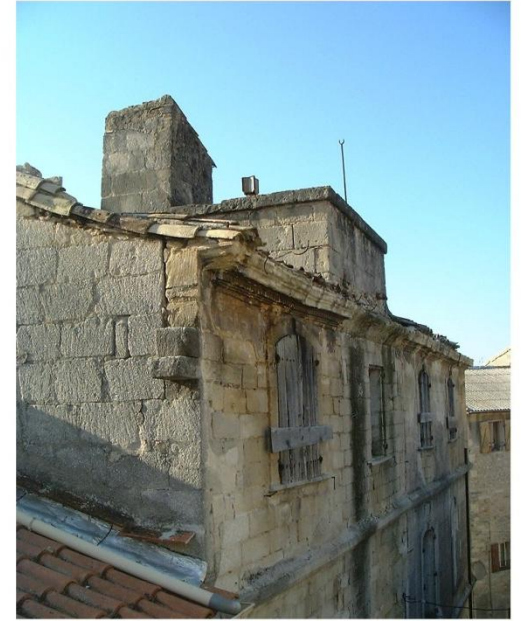


OPERATION GLOBALE D'AMENAGEMENT

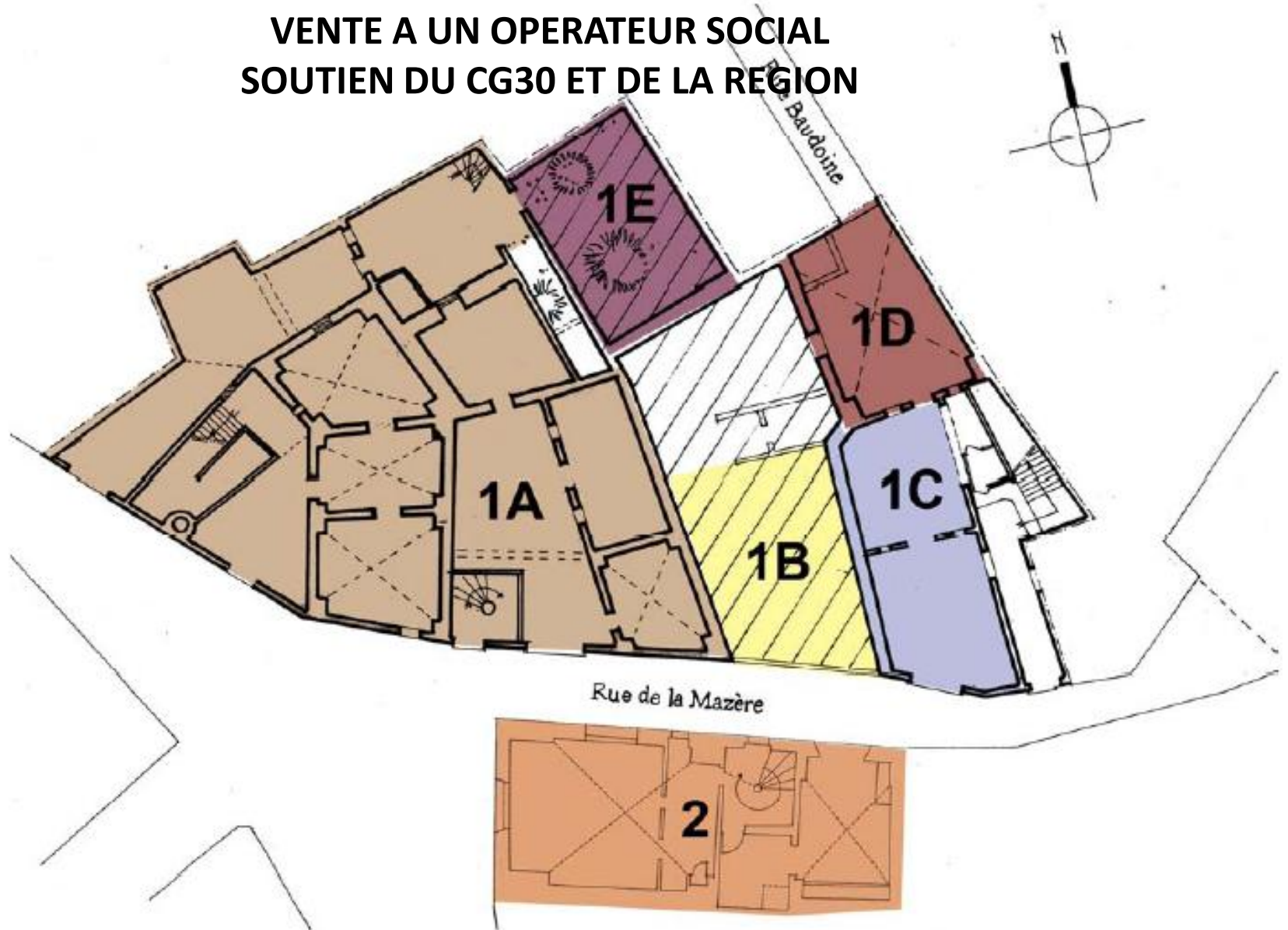
Construction de 18 logements sociaux Ilots Mazère à Sommières
Habitat insalubre en zone inondable



Immeuble du XVII^e et XVIII^e
EN STOCK ACQUISITION AMIABLE ET EXPRO
VENTE EN L'ETAT AYANT ECHOUÉ



**TRAVAUX CONFORTATIFS & PC REALISES PAR LA COMMUNE
VENTE A UN OPERATEUR SOCIAL
SOUTIEN DU CG30 ET DE LA REGION**



DIAGNOSTIC CHAUSSEE

REZ de CHAUSSEE



1^{er} ETAGE



2^e ETAGE



3^e ETAGE



 MAZERE 1A : POSSIBILITE DE SURELEVATION D'UN NIVEAU

1^{er} ETAGE



2^e ETAGE

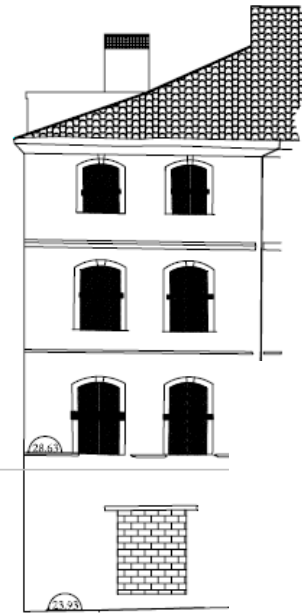
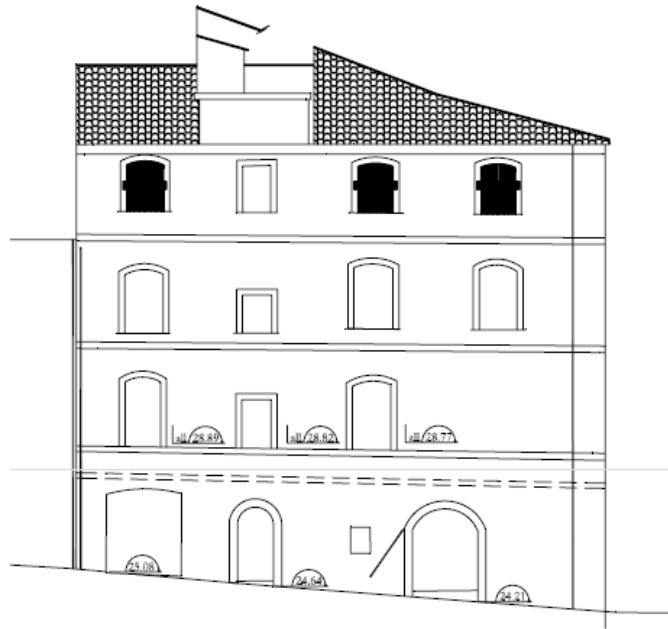


3^e ETAGE

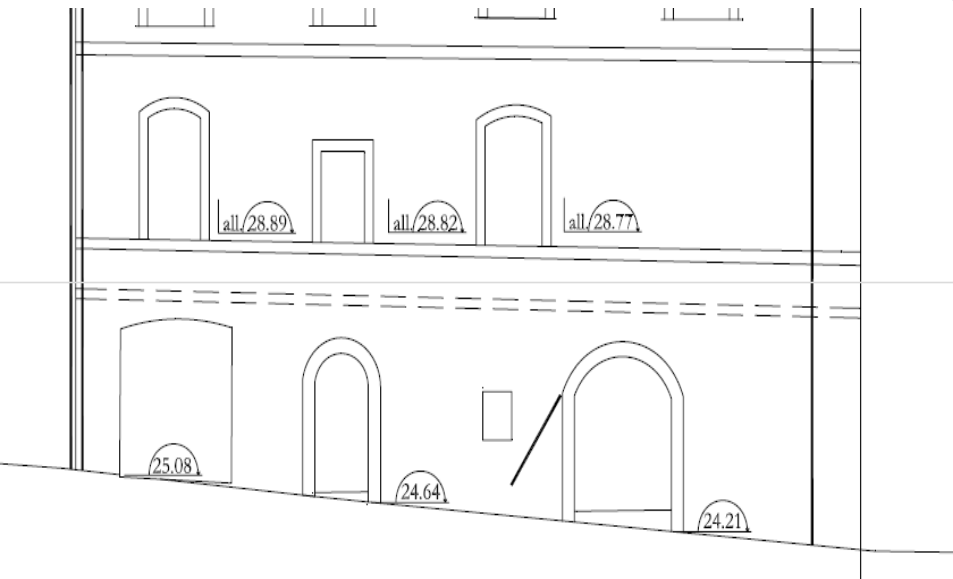


 MAZERE 1D : PERCEE RUE BAUDOINE SUR 2 NIVEAUX

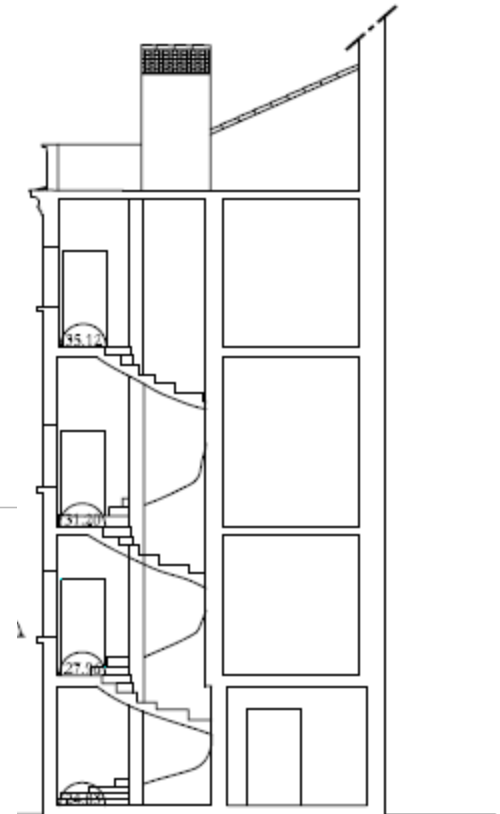
DIAGNOSTIC

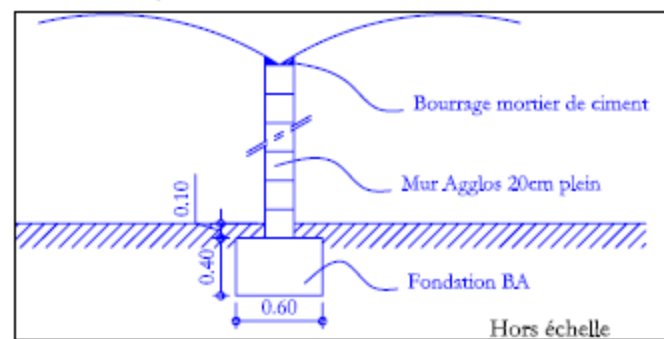
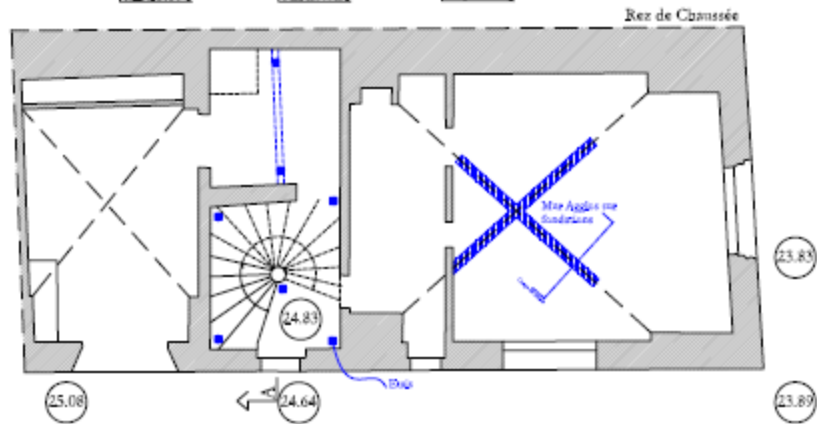
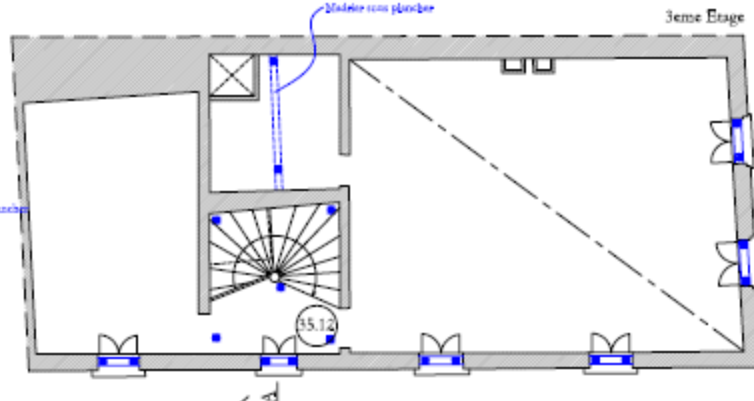
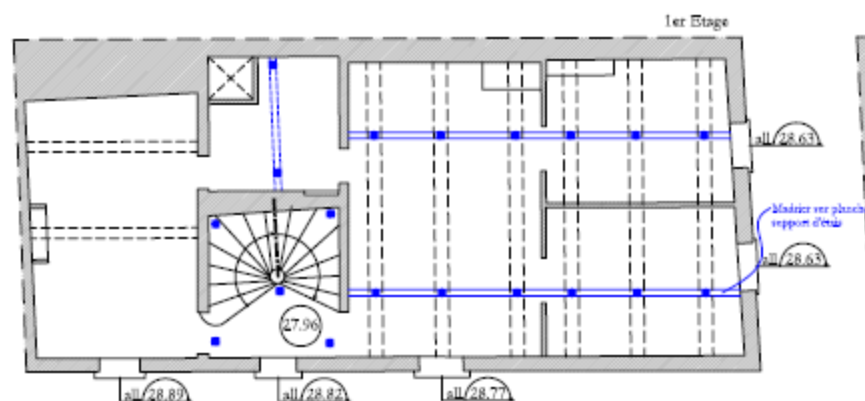
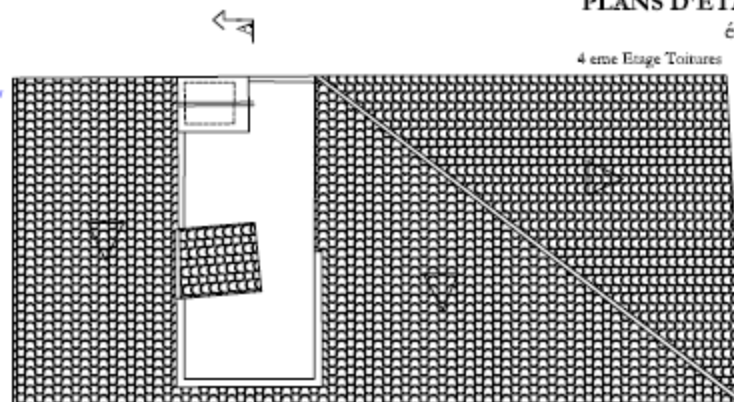
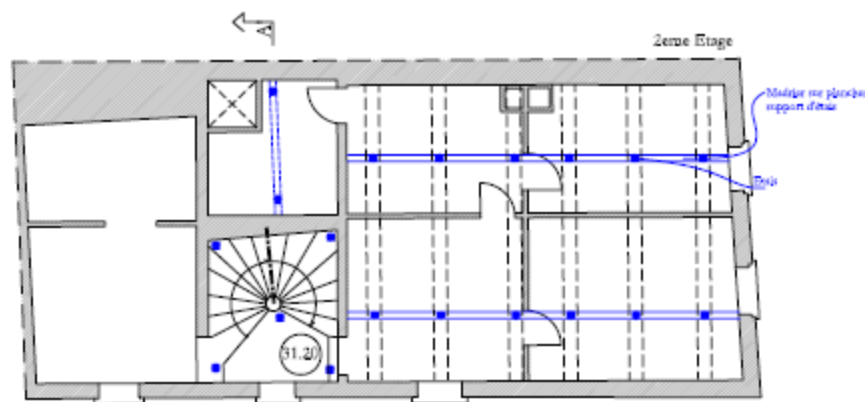


NPHEE : 28.19m
09/09/2002



NPHE : 28.19m
09/09/2002





ETAT PROJETE
 PLANS PLANCHER HAUT ET
 CHARPENTE
 échelle 1/100

